

WHO WE ARE HOW WE SERVE

ORGANIZATION OVERVIEW 2025

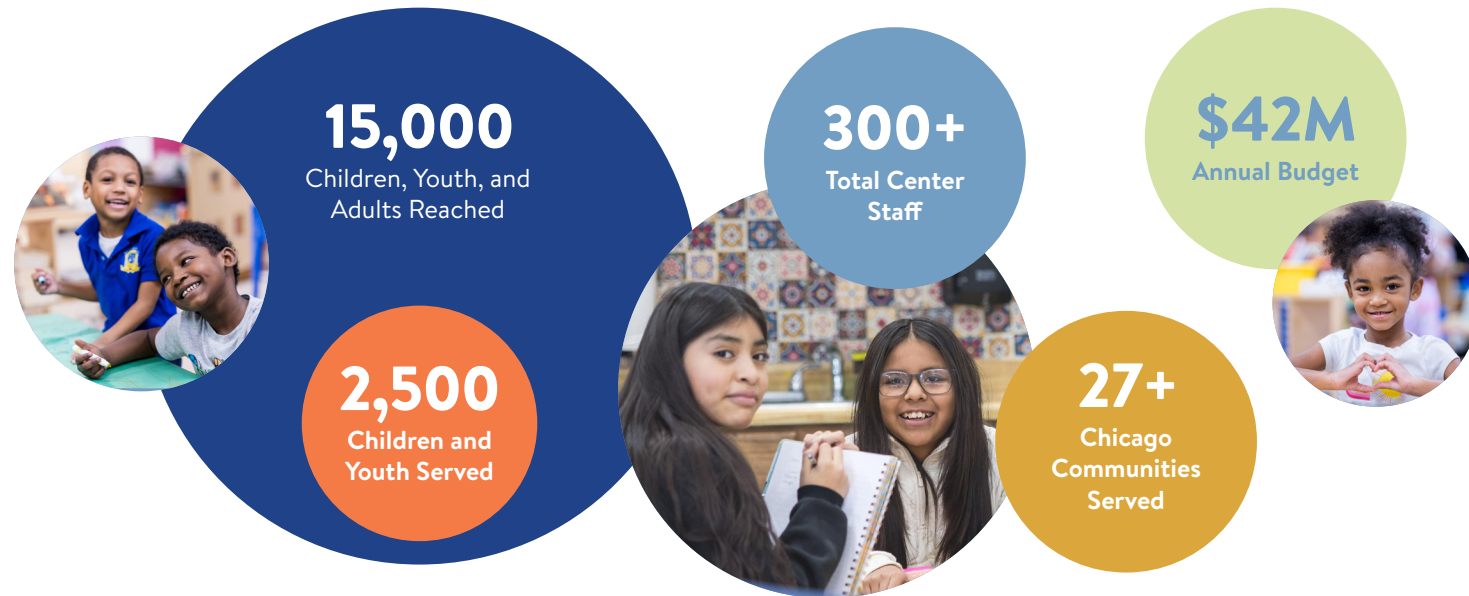


CAROLE ROBERTSON CENTER
for Learning

OUR IMPACT

The Carole Robertson Center for Learning is a leader in building brains and championing families. With an approach that combines direct service, robust data and evaluation practices, and community-based advocacy, the Center serves as a living incubator for fresh innovations in early childhood education and youth development. We are rooted in social justice and anchored by our mission to educate, enrich, and empower children and families—all while catalyzing systems change to benefit young learners everywhere.

BY THE NUMBERS



WHERE WE SERVE

The Carole Robertson Center reaches 15,000 children and adults annually through our direct service programs, community partnerships, workforce development efforts, and support services for independent child care providers.

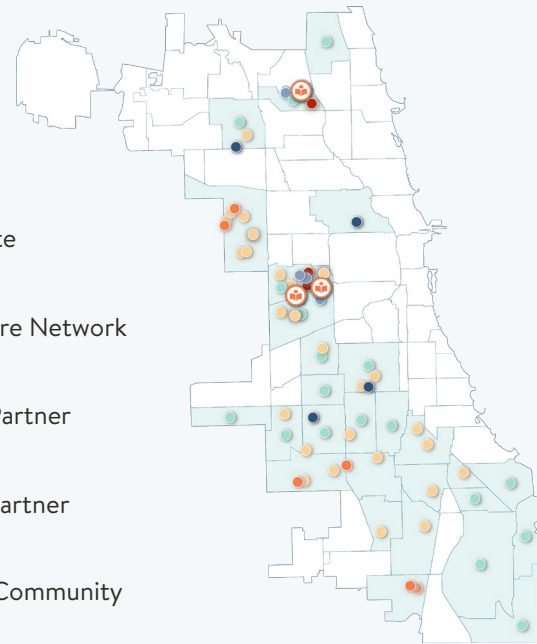
Our direct service footprint extends to more than two dozen communities across Chicago, with flagship sites in Little Village, North Lawndale, and Albany Park.

The Center is one of the only organizations in Illinois serving children of all ages.

We offer early education programs for children prenatal through age 5 through a variety of program models: center-based, home visiting, micro-centers at local schools, and via a network of center and family child care provider partners.

We also offer youth development programs for youth ages 5 to 17 at our flagship sites and at a network of partner schools.

- Flagship Site
- Micro-Center
- Subrecipient Site
- Family Child Care Network
- Center-Based Partner
- School-Based Partner
- Home Visiting Community



To learn more about our service model, please visit our website or scan this QR code:
www.carolerobertsoncenter.org/services



THE THREE PILLARS OF HIGH QUALITY



TRANSFORMATIVE PROGRAMS

- Social Emotional Learning (SEL)
- Kindergarten Readiness
- Youth Development
- Family Support Services
- Home Visiting



LEARNING & EVALUATION

- Staff Credential and Degree Attainment
- Professional Development Opportunities for Center Partners
- Data/Continuous Quality Improvement



ADVOCACY & SYSTEMS CHANGE

- Sector Leadership
- Community-Based Advocacy
- Using Practice to Inform Policy

DIMENSIONS OF OUR IMPACT

Shared Governance with Families

We are committed to parent/family and alumni representation on our Board of Directors, and we engage a Family & Parent Policy Council in organizational decision-making.



Youth Voice and Restorative Justice

Our Restorative Justice Initiative supports our school partners in developing alternatives to more traditional, punitive models of justice and reinforces the role of student voice and leadership in school culture.

Kindergarten Readiness

Our innovative BASES-K approach (Bridging Academic and Social Emotional Supports into Kindergarten) reframes what it means to be kindergarten ready by building partnerships among the three pillars that support a child: their family, their local school and surrounding community, and their early learning and after-school provider.

Workforce Investments

The well-being of our staff is the foundation of the Center's ability to educate, enrich, and empower our children and families. The Center's emphasis on thriving wages and benefits, professional development for ongoing learning and growth, and staff wellness create the conditions for the greatest impact.



DID YOU KNOW?

More than half of our workforce comes from the communities we serve.

MISSION

To educate, enrich, and empower children and families.

VISION

To help build a just and equitable society, the Carole Robertson Center for Learning, in partnership with families, will be a beacon of best practices, innovation and impact in early childhood, and youth development.

PURPOSE

We exist to ensure that every child and family we impact can reach their full potential in school and life. Our unwavering commitment to eliminating the opportunity gap in Chicago and across Illinois begins by creating early childhood education and youth development environments that are abundant in compassion, support, and quality, helping create a more just, inclusive, and equitable world for all children.

AN HONOR AND RESPONSIBILITY

Since its inception, the Center has worked to honor the life and memory of Carole Robertson who, together with her friends Addie Mae Collins, Cynthia Wesley, and Denise McNair, was killed in the 1963 bombing of the 16th Street Baptist Church in Birmingham, Alabama.



Carole Robertson



Addie Mae Collins



Cynthia Wesley



Denise McNair



DID YOU KNOW?

More than 26 languages are spoken across our three flagship sites—English, Spanish, and Arabic being the top three.



CAROLE ROBERTSON CENTER
for Learning

Carole Robertson Center for Learning
1111 South Western Avenue, Suite B
Chicago, IL 60612
312.243.7300
www.carolerobertsoncenter.org

